

Widening Participation in PGR workshop

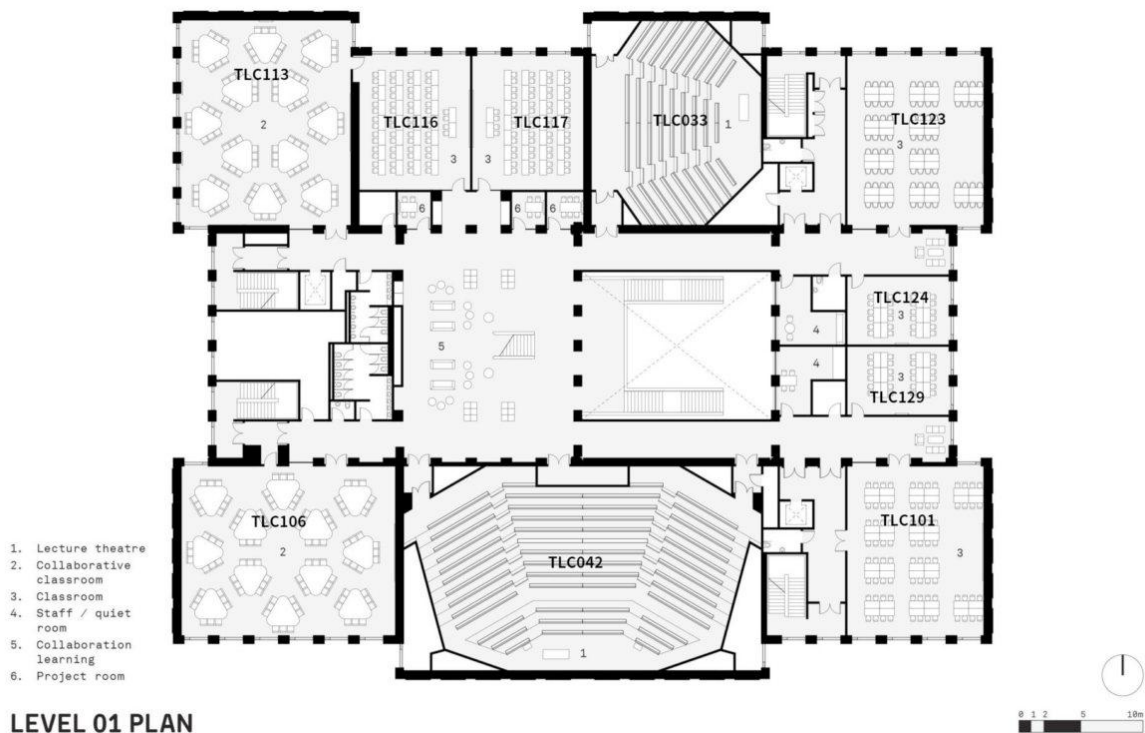
Durham 31st March-1st April 2026

How to get there

The workshop will take place in the Teaching and Learning Centre, South Road at Durham University (what3words ///ideas.gloves.level). Maps showing its location can be found on the below link:

[Teaching and Learning Centre - Our services: Libraries and site information - Guides at Durham University](#)

The sessions will take place on the first floor in rooms TLC 106 and TLC116, whilst food and drinks will be served in TLC 117. Entering the building from the South Road entrance, walk past reception and up the main stairs to the 1st floor. Below is a map of the 1st floor showing the location of the rooms.



Why Students Don't Choose Postgraduate Chemistry: The Impact of Social and Economic Factors

15 mins

Prof Deborah Longbottom (Cambridge University)

Undergraduate Research Internships as a Window into Postgraduate Study

15 mins

Dr Helen Cramman (Durham University, ReNU+ CDT)

What influences final year undergraduate students' choices about doing a PhD? Finding from a small pilot study

15 mins

Dr Alice Fraser-McDonald (The Open University)

Progression from remote taught programmes to Postgraduate Research: exploring motivations and barriers

Option 2

Institution led research and action – Chair Prof Libby Gibson - TLC 116

20 mins

Dr Ilaria Meazzini (Royal Society of Chemistry)

Socioeconomic inclusion in chemistry: landscape analysis and implications on UG career trajectory

20 mins

Andrew Moss (Durham University)

Developing a positive research culture for PGRs through collaborative development

20 mins

Dominic Grantley Smith (Faraday Institution)

Reimagining PhD Programmes: Driving Diversity and Culture Change

2:00 – 2:10

Changeover

2:10 – 2:45

Option 1

Student Panel sharing their experiences of competency-based admissions – Chair Dr Helen Cramman - TLC106

Eugenie Mempuo

Amanda Bennett

Kyle Affleck

Option 2 **Supporting PGR students in their studies – Chair Prof Chris Groves - TLC116**

20 mins Prof Stephanie Wilson/Dr Nicola Kirkby (City University, CDT Diverse)

Diverse CDT: Innovative Programme Design for Widening Participation

15 mins Prof Roger Penlington (Northumbria University)

An alternative view on PhD learning

2:45 – 3:30 ***Networking with Tea/Coffee TLC117***

3:30 – 4:30 **Workshop facilitated by EPSRC EDI Hub+: Sharing and Scaling up best practice for Widening Participation in PGR - TLC106**

Facilitated by Dr Elaine Brown (Bradford)

4:30 Close for the day

Wednesday 1st April

9:00 – 9:25 ***Arrival with tea/coffee TLC117***

9:25 – 9:30 **Welcome and Housekeeping TLC106**

9:30 – 12:30 **Theory of Change and Embedding Evaluation Workshop TLC106**

Facilitated by Dr Helen Cramman (Durham, ReNU+)

Tea/Coffee break at 11 in TLC117

12:30 – 1:15 ***Lunch TLC116***

Option 1

1:15 – 2:45 **Neuroinclusive Supervision for Supervisors TLC106**

Prof Debbie Riby (Durham)

Option 2 **Carrying out Equality Impact Assessments TLC 116**

Angela Johnson (Durham)

2:45-3:00 ***Networking with Tea/Coffee TLC117***

3:00 **Conference close**